



ENTREE

- | | | |
|-----------|--|-----------------|
| 01 | EDAMAME (GF), (V)
<i>Boiled green bean with salt</i> | \$ 7.90 |
| 02 | REN KON (GF), (V)
<i>Lotus roots with a hint of salt</i> | \$ 8.90 |
| 03 | AGEDASHI TOFU (V)
<i>Deep fried tofu and vegetables served with tempura sauce</i> | \$ 11.90 |
| 04 | TERIYAKI TOFU (V)
<i>Deep fried tofu and vegetables served with teriyaki sauce</i> | \$ 11.90 |
| 05 | TOFU DENGAKU (V/O), (GF)
<i>Deep fried tofu served with miso sauce and topped with fish flakes</i> | \$ 11.20 |
| 06 | CHICKEN KARAAGE
<i>Crispy deep fried chicken marinated in ginger sauce</i> | \$ 14.20 |
| 07 | TAKOYAKI
<i>Deep fried Japanese style octopus ball with fish flakes topping</i> | \$ 12.90 |
| 08 | OKONOMIYAKI
<i>Mini Japanese style pizza with shrimp, cuttlefish, egg and vegetables</i> | \$ 13.90 |
| 09 | PORK GYOZA (5 pieces)
<i>Japanese style minced pork and vegetables dumplings</i> | \$ 9.20 |
| 10 | PRAWN GYOZA (5 pieces)
<i>Japanese style minced prawn and vegetables dumplings</i> | \$ 9.80 |
| 11 | MIXED TEMPURA
<i>A combination of lightly battered fried seafood and vegetables</i> | \$15.90 |
| 12 | VEGETARIAN SPRING ROLLS (V)
<i>Japanese style vegetable spring roll</i> | \$8.90 |
| 13 | BUTA SHOGAYAKI (pork appetizer)
<i>Grilled marinated pork belly</i> | \$16.90 |
| 14 | CRAB CLAW
<i>Golden deep fried crab dumpling, served with hot chilli mayo</i> | \$10.90 |
| 15 | KOROKKE (V)
<i>Mashed potato mixed with chopped veggies, coated with fine crumb</i> | \$ 7.90 |
| 16 | BEEF TATAKI
<i>Rare Flame grilled scotch fillet served with vinegar sauce</i> | \$15.90 |
| 17 | TUNA TATAKI
<i>Rare Flame grilled tuna, served with a drizzle of special sauce</i> | \$16.90 |
| 18 | SOFT SHELL CRAB (Chilli or Non-chilli Base)
<i>Deep fried Japanese style soft shell crab</i> | \$19.80 |
| 19 | IKA YAKI (**at least 15mins) (GF/O)
<i>Grilled whole squid glazed with teriyaki sauce</i> | \$25.90 |
| 20 | SABA YAKI (**at least 15mins) (GF/O)
<i>Grilled fresh mackerel with salt and pepper</i> | \$13.90 |

(V) – VEGETARIAN, (GF) – GLUTEN FREE, (GF/O) –GLUTEN FREE OPTION

*Please let us know if you have any food allergies
(All prices inclusive of GST and subject to change without notice)*



SASHIMI (GF/O)

SET MENU any choice of the dishes served with miso soup, salad and rice for extra \$8.80

	9 pieces	15 pieces
21 ASSORTED SASHIMI	\$22.90	\$32.90
22 TUNA SASHIMI	\$22.90	\$32.90
23 SALMON SASHIMI	\$19.90	\$29.90

SUSHI NIGIRI / ABURI

Small rectangular blocks of vinegar rice topped with a thin slice of raw fish or cooked egg etc with wasabi inside

24 TAMAGO (Egg Omelette)	\$ 5.00
25 TUNA (RAW)	\$ 7.50
26 SALMON (RAW)	\$ 7.00
27 PRAWN	\$ 7.00
28 SCALLOP (RAW)	\$ 9.00
29 TOBIKO (Caviar)	\$ 7.00
30 UNAGI (Eel)	\$ 10.50
31 INARI	\$ 6.50
32 DELUXE SUSHI	\$14.90 (6pcs) \$25.90 (10pcs)
<i>Assorted sushi roll and nigiri sushi</i>	
33 ABURI TUNA (TORCHED)	\$ 8.50
34 ABURI SALMON (TORCHED)	\$ 8.00
35 ABURI SCALLOP (TORCHED)	\$10.00
36 ASSORTED ABURI (TORCHED)	\$16.90 (4pcs)

SUSHI ROLL / MAKI

SET MENU any choice of the dishes served with miso soup and salad for extra \$6.50

Some rolls contain Japanese mayo inside



	5 pieces	10 pieces
37 CUCUMBER ROLL (GF/O)	\$ 6.90	\$11.90
38 AVOCADO & CUCUMBER ROLL (GF/O)	\$ 7.90	\$13.90
39 VEGETABLE ROLL (GF/O) (V)	\$ 8.90	\$16.90
40 TUNA ROLL (RAW) (GF/O)	\$ 8.90	\$16.90
41 SALMON ROLL (RAW) (GF/O)	\$ 8.90	\$16.90
42 TERIYAKI BEEF ROLL	\$ 12.90	\$20.90
43 TERIYAKI CHICKEN ROLL	\$ 9.80	\$18.90
44 CALIFORNIA ROLL (CRAB MEAT)	\$ 9.80	\$18.90
45 TUNA SALAD ROLL (COOKED) (GF/O)	\$ 7.90	\$13.90

(V) – VEGETARIAN, (GF) – GLUTEN FREE, (GF/O) – GLUTEN FREE OPTION

(All prices inclusive of GST and subject to change without notice)

REVERSED ROLL

SET MENU any choice of the dishes served with miso soup and salad for extra \$6.50



46 TOBIKO ROLL

\$12.20 (5 pieces) \$21.20 (10 pieces)

*Prawn, cucumber, mayonnaise, avocado and tamago.
Topped with tobiko*



50 SALMON ABURI ROLL

\$22.90 (10 pieces)

Mayonnaise, avocado and cucumber. Topped with torch salmon, cheese with azuki sauce and black sweet sauce



47 PRAWN ROLL

\$ 10.20 (5 pieces) \$18.90 (10 pieces)

*Prawn tempura, cucumber, mayonnaise and tamago.
Topped with tempura flakes, tobiko and azuki sauce.*



51 RAINBOW ROLL

\$ 13.90 (5 pieces) \$24.90 (10 pieces)

Avocado, cucumber and mayonnaise. Topped with raw salmon, raw tuna, prawn and tobiko



48 SPICY TUNA ROLL

\$14.90 (5 pieces)

Raw fresh tuna rolled with crispy lettuce, jalapeno and cucumber served with spicy mayonnaise



52 SPIDER ROLL

\$24.90 (10 pieces)

Deep fried soft shell crab, Iceberg lettuce, mayonnaise and cucumber. Topped with tobiko, black sweet sauce and chilli mayo



49 CHICKEN KATSU ROLL

\$ 10.20 (5 pieces) \$18.90 (10 pieces)

*Chicken katsu, mayonnaise, cucumber and tamago.
Topped with Katsu mayo, **chilli mayo** and tempura flakes*

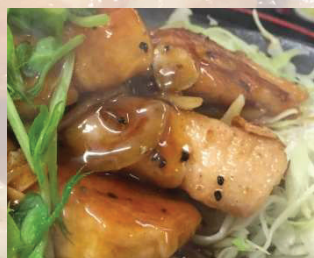


53 UNAGI ROLL

\$14.90 (5 pieces) \$25.90 (10 pieces)

*Unagi, cucumber, mayonnaise and avocado.
Topped with tobiko and black sweet sauce*

(All prices inclusive of GST and subject to change without notice)



TEPPANYAKI

SET MENU any choice of the dishes served with miso soup, salad and rice for extra \$8.80

- | | |
|---|-----------------|
| 54 CHICKEN (GF/O) | \$ 24.90 |
| <i>Japanese style hot plate grilled boneless chicken with vegetable and sauce</i> | |
| 55 BEEF (GF/O) | \$ 36.90 |
| <i>Japanese style hot plate grilled tenderloin fillet with vegetable and sauce</i> | |
| 56 SALMON (GF/O) | \$ 28.90 |
| <i>Japanese style hot plate grilled salmon with vegetable and sauce</i> | |
| 57 TUNA (GF/O) | \$ 29.90 |
| <i>Japanese style hot plate grilled tuna with vegetable and sauce</i> | |
| 58 FISH (GF/O) | \$ 24.90 |
| <i>Japanese style hot plate grilled sea perch with vegetable and sauce</i> | |
| 59 PRAWN (GF/O) | \$ 29.90 |
| <i>Japanese style hot plate grilled fresh local tiger prawns with vegetable and sauce</i> | |
| 60 SCALLOP (GF/O) | \$ 31.90 |
| <i>Japanese style hot plate grilled scallops with vegetable and sauce</i> | |
| 61 UNAGI | \$ 27.90 |
| <i>Japanese style hot plate grilled eel with vegetable and sauce</i> | |

SALAD



67

- | | |
|--|----------------|
| 62 GREEN SALAD (GF/O), (V) | \$11.90 |
| <i>Mixed vegetables with traditional Japanese dressing</i> | |

- | | |
|--------------------------------------|----------------|
| 63 SEAWEED SALAD (V) | \$ 7.90 |
| <i>Marinated fresh green seaweed</i> | |

- | | |
|---|----------------|
| 64 SQUID SALAD | \$ 8.90 |
| <i>Marinated squid and Japanese pickles</i> | |

- | | |
|--|----------------|
| 65 SALMON AND AVOCADO SALAD (GF/O) | \$19.80 |
| <i>Raw Salmon, avocado and vegetable salad served with traditional Japanese dressing</i> | |

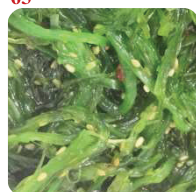
- | | |
|--|----------------|
| 66 TUNA AND AVOCADO SALAD (GF/O) | \$19.80 |
| <i>Raw Tuna, avocado and vegetable salad served with traditional Japanese dressing</i> | |

- | | |
|--|----------------|
| 67 YUKI SALAD | \$21.90 |
| <i>Raw tuna, salmon, seaweed salad, prawn, avocado and vegetable salad served with traditional Japanese dressing</i> | |

64

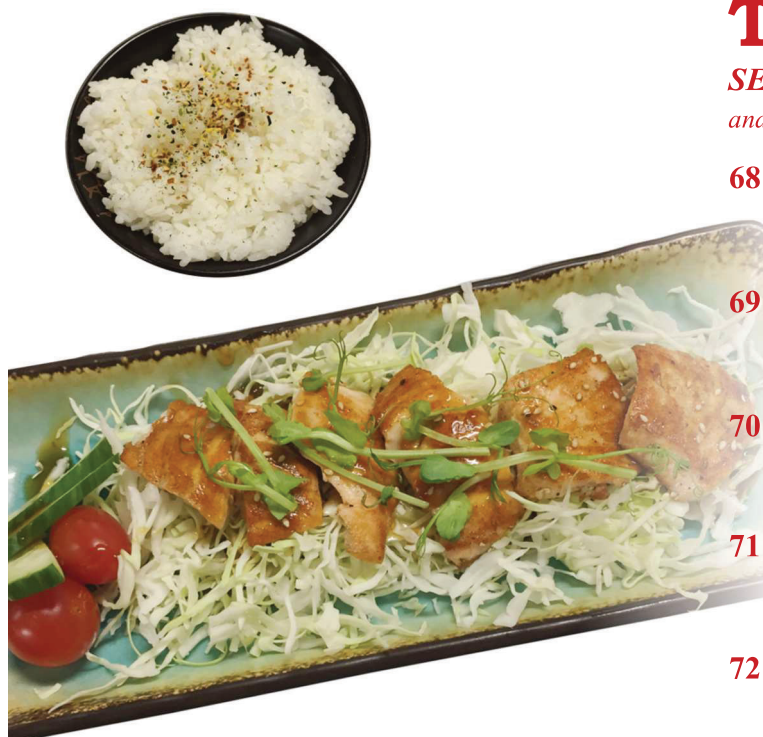


63



(V) – VEGETARIAN, (GF) – GLUTEN FREE, (GF/O) – GLUTEN FREE OPTION

(All prices inclusive of GST and subject to change without notice)



TERIYAKI

SET MENU any choice of the dishes served with miso soup and salad for extra \$6.50

- | | |
|---|-----------------|
| 68 CHICKEN TERIYAKI (GF/O) | \$ 18.90 |
| <i>Japanese style grilled chicken in our special homemade teriyaki sauce with rice</i> | |
| 69 BEEF TERIYAKI | \$ 20.80 |
| <i>Japanese style grilled beef in our special homemade teriyaki sauce with rice</i> | |
| 70 FISH TERIYAKI | \$ 18.90 |
| <i>Japanese style lightly battered fried fish in our special homemade teriyaki sauce with rice</i> | |
| 71 SALMON TERIYAKI (GF/O) | \$ 20.80 |
| <i>Japanese style grilled salmon in our special homemade teriyaki sauce with rice</i> | |
| 72 TUNA TERIYAKI (GF/O) | \$ 23.90 |
| <i>Japanese style grilled tuna in our special homemade teriyaki sauce with rice. Normally cooked medium rare.</i> | |



DONBURI (RICE BOWL)

SET MENU any choice of the dishes served with miso soup and salad for extra \$6.50

- | | |
|--|-----------------|
| 73 KATSUDON | \$ 18.90 |
| <i>Katsu chicken cooked with scrambled egg, onion and sauce</i> | |
| 74 OYAKODON | \$ 18.90 |
| <i>Chicken cooked with scrambled egg, onion and sauce</i> | |
| 75 UNADON | \$ 22.90 |
| <i>Charcoal grilled eel in our special homemade teriyaki sauce</i> | |
| 76 TEN DON | \$ 19.80 |
| <i>Mixed tempura with sauce over rice</i> | |
| 77 SALMON DON(Raw) | \$ 22.90 |
| <i>Raw salmon over sushi rice</i> | |
| 78 TEKKA DON | \$ 24.90 |
| <i>Raw tuna over sushi rice</i> | |
| 79 CHIRASHI | \$ 24.90 |
| <i>Assorted sashimi over sushi rice</i> | |



KATSU

Lightly crumbed and deep fried, served with katsu sauce

SET MENU any choice of the dishes served with miso soup, salad and rice for extra \$8.80

- | | |
|--|-----------------|
| 80 CHICKEN KATSU | \$ 14.90 |
| 81 PRAWN KATSU | \$ 19.80 |
| 82 FISH KATSU | \$ 14.90 |
| 83 SEAFOOD KATSU | \$ 19.20 |
| <i>Combination of prawn and fish katsu</i> | |

(V) – VEGETARIAN, (GF) – GLUTEN FREE, (GF/O) –GLUTEN FREE OPTION

(All prices inclusive of GST and subject to change without notice)

CURRY

SET MENU any choice of the dishes served with miso soup and salad for extra \$6.50

- | | | |
|-----------|---|----------------|
| 84 | VEGETABLE CURRY (V) | \$15.90 |
| | <i>Assorted vegetables in mild Japanese curry</i> | |
| 85 | CHICKEN KATSU CURRY | \$19.90 |
| | <i>Katsu Chicken and assorted vegetables in mild Japanese curry</i> | |
| 86 | FISH KATSU CURRY | \$19.90 |
| | <i>Katsu Fish and assorted vegetables in mild Japanese curry</i> | |
| 87 | PRAWN CURRY | \$22.80 |
| | <i>Katsu Prawn and assorted vegetables in mild Japanese curry</i> | |
| 88 | SEAFOOD CURRY | \$22.80 |
| | <i>Katsu Prawn, Fish and assorted vegetables in mild Japanese curry</i> | |



UDON **Not suitable for vegetarian*

Japanese hot noodle soup

SET MENU any choice of the dishes served with miso soup and salad for extra \$6.50

- | | | |
|-----------|-------------------------------|----------------|
| 89 | PLAIN UDON | \$10.90 |
| 90 | BEEF UDON | \$20.90 |
| 91 | CHICKEN UDON | \$19.20 |
| 92 | PRAWN TEMPURA UDON | \$26.80 |
| 93 | SEAFOOD TEMPURA UDON | \$26.80 |
| 94 | VEGETABLE TEMPURA UDON | \$19.80 |

TEMPURA

Lightly battered and fried, served with tempura sauce

SET MENU any choice of the dishes served with miso soup, salad and rice for extra \$8.80

- | | | |
|------------|---|----------------|
| 99 | VEGETABLE TEMPURA (V) | \$13.90 |
| | <i>Seasonal vegetables</i> | |
| 100 | PRAWN TEMPURA | \$18.90 |
| | <i>Prawn and Seasonal vegetables</i> | |
| 101 | SEAFOOD TEMPURA | \$18.90 |
| | <i>Seasonal seafood and vegetables</i> | |
| 102 | SALMON TEMPURA | \$16.90 |
| | <i>Salmon and Seasonal vegetables</i> | |
| 103 | FISH TEMPURA | \$14.90 |
| | <i>Sea perch and Seasonal vegetables</i> | |
| 104 | SQUID RING TEMPURA | \$14.90 |
| | <i>Squid ring and Seasonal vegetables</i> | |

SOBA

SET MENU any choice of the dishes served with miso soup and salad for extra \$6.50

- | | | |
|-----------|--|----------------|
| 95 | ZARU SOBA (V) | \$14.20 |
| | <i>Cold Japanese buck wheat noodles served with special dipping sauce, wasabi, crushed ginger & spring onion</i> | |
| 96 | PRAWN TEMPURA SOBA | \$27.80 |
| 97 | SEAFOOD TEMPURA SOBA | \$27.80 |
| 98 | VEGETABLE TEMPURA SOBA (V) | \$20.20 |



(V) – VEGETARIAN

(All prices inclusive of GST and subject to change without notice)

BENTO Box

Sushi rolls cannot be changed

BENTO A

Choice of your main dish + rice, miso soup, salad, sushi rolls

BENTO B

Choice of your main dish + rice, miso soup, salad, sushi rolls, & choice of spring roll or gyoza

BENTO C

Choice of your main dish served with mixed tempura + rice, miso soup, salad, sushi rolls, & choice of spring roll or gyoza

MAIN DISHES	A	B	C
CHIRASHI		\$28.90	\$32.90
CHICKEN TERIYAKI	\$24.90	\$26.90	\$29.90
FISH TERIYAKI	\$24.90	\$26.90	\$29.90
BEEF TERIYAKI	\$26.90	\$28.90	\$31.90
SALMON TERIYAKI	\$26.90	\$28.90	\$31.90
SABA YAKI (*at least 15 min)	\$24.90	\$26.90	\$29.90
UNAGI	\$26.90	\$28.90	\$32.90
*CHICKEN KATSU	\$24.90	\$26.90	\$29.90
*FISH KATSU	\$24.90	\$26.90	\$29.90
*PRAWN KATSU	\$26.90	\$28.90	\$31.90
*SEAFOOD KATSU (Prawn & Fish)	\$25.90	\$27.90	\$30.90
TEMPURA	\$24.90	\$26.90	
TORI KARAAGE	\$24.90	\$26.90	\$29.90

VEGETARIAN BENTO

\$24.20

Includes vegetable tempura, rice, miso soup, salad, + choice of spring roll or tofu

*Curry Gravy (No Vege)

\$ 3.00 (For Katsu Bento Only)

SIDE DISHES

105 RICE	\$ 3.50
106 MISO SOUP	\$ 3.50
107 JAPANESE PICKLES	\$ 6.20

HOT POT

Cooking at table – Self Cooking (Minimum 2 people)

Order required in advance

108 SHABU SHABU

\$ 32 pp

Thin slices of prime beef, vegetables, tofu and udon cooked in a clear broth served with ponzu and sesame dipping sauce. Rice and Miso soup included.

109 SUKIYAKI

\$ 32 pp

Thin slices of prime beef, vegetables, tofu and udon cooked in a special sukiyaki sauce with raw egg for dipping. Rice and Miso soup included.

EXTRAS

BEEF (100g)	\$17.90
CHICKEN	\$14.90
PRAWN (4 PIECES)	\$14.90
VEGETABLES	\$10.90
UDON	\$ 5.90



(All prices inclusive of GST and subject to change without notice)